



INTEGRATED GRIT – SCREEN AUTOSEP DF BW

The **DYNAMIK AUTOSEP DF BW** is combination device designed for mechanical cleaning of municipal and industrial wastewaters, combining the functions of a mechanical brush screen and whirl grit separator with conveyer.

Operation principle:

Wastewater let in via influent port loses its velocity entering the inlet chamber and then flowing onto concave perforated plate made of stainless steel. Solids are retained on the perforation while the fluid is diverted into bottom tank. Slowly rotating rakes with a self-cleansing action by an inertia mechanism sweep the screenings from the perforation and eject them into discharge chute for further dewatering and compaction in a screw screenings press and disposal into containers.

From the bottom tank, screened wastewater flows into the whirl grit separator for sand sedimentation; during whirling, the grit loses speed and settles to conical bottom. An optional air-water washing system can be provided which, making the grit slurry whirl, at the same time it flushes suspended contaminants out of the grit and prevents the pulp from depositing and getting rotten on the device's walls. A mammoth pump lifts the pulp and conveys it to the grit classifier for final washing (option), separation, dewatering and discharge of the grit to the outside. The whirl grit separator incorporates two independent aeration and washing systems to prevent the organic matter from deposition on grit grains and to assist flotation of fats and other suspended matter collected and removed by means of manually adjusted funnel.

Smaller versions of the integrated grit - screen AUTOSEP DF BW are fitted with a screw conveyor instead of mammoth pump for grit separation.



Scope of delivery:

- mechanical brush screen
- screenings presses (option)
- whirl grit separator
- grit classifier
- control cabinets

OPTIONS

- whirl grit separator aeration
- grit washing using municipal water
- flotation sludge removal system
- hermetic covers
- heating system
- operator platforms



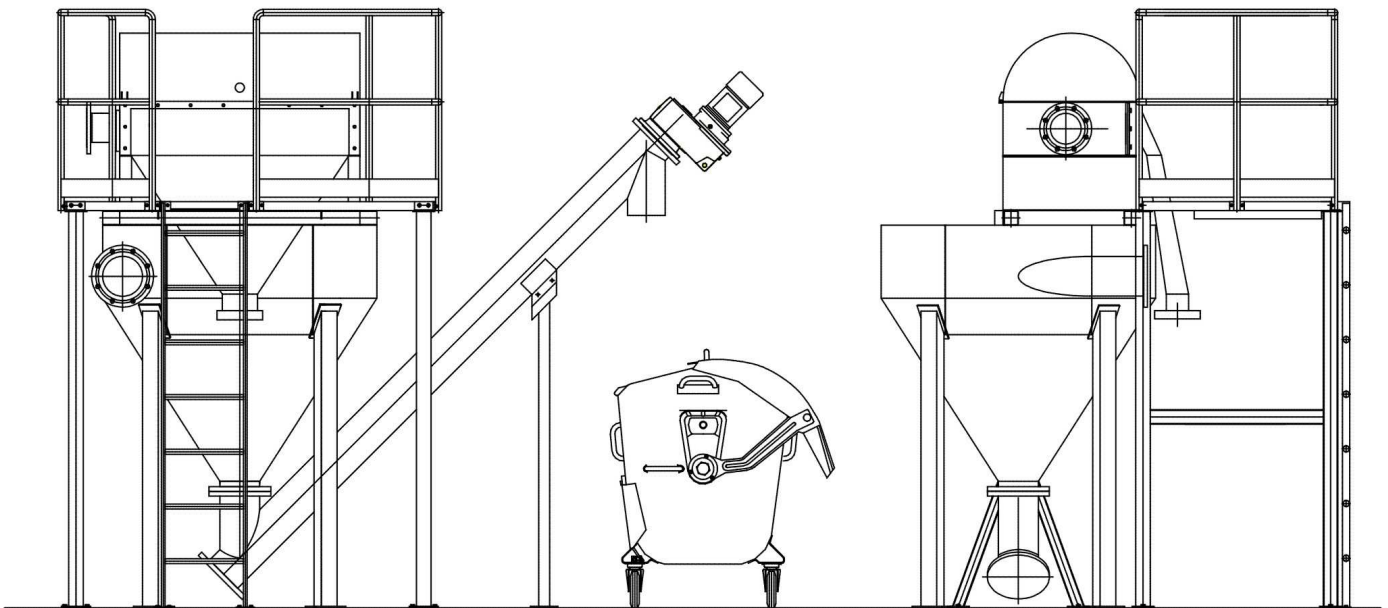


MATERIAL

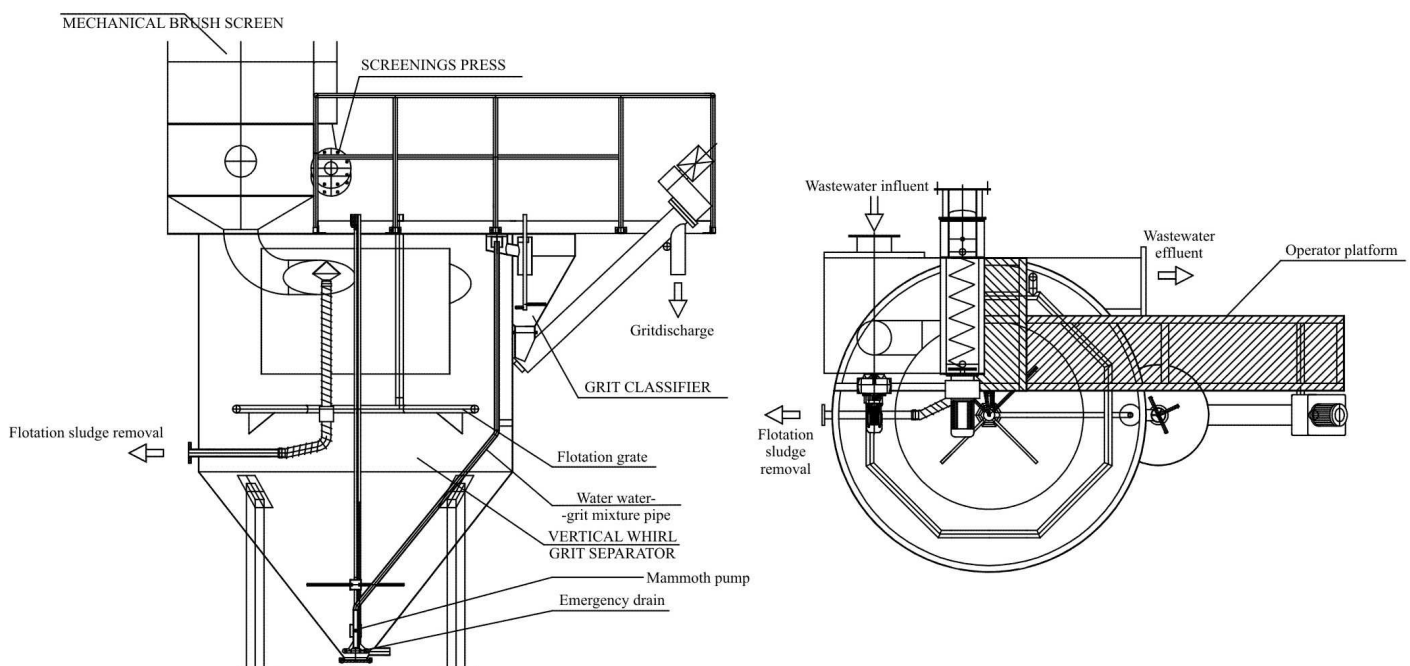
– EN 1.4301 stainless steel (standard)

SPECIFICATIONS:

Each unit is designed according to the specifications by the design engineer acc. to order Outer dimensions, diameters and positions of the connections depend on size of the unit acc. to the required flow volume and efficiency of filtration and sand removal. The AUTOSEP DF BW is available for wastewater flow volume up to 400 m³/h.



Example - AUTOSEP DF BW unit for small flow volumes (up to 80 m³/h)



Example - AUTOSEP DF BW unit for bigger flow volumes (in excess of 80 m³/h)